

STRUCTURE OF THE ITALIAN CATHOLIC FEDERATION

Central Council

The Central Council is the governing body which formulates and directs the programs for the organization which the Branches follow. It is composed of 16 members.

8 Life Members (selected by the Central Council)

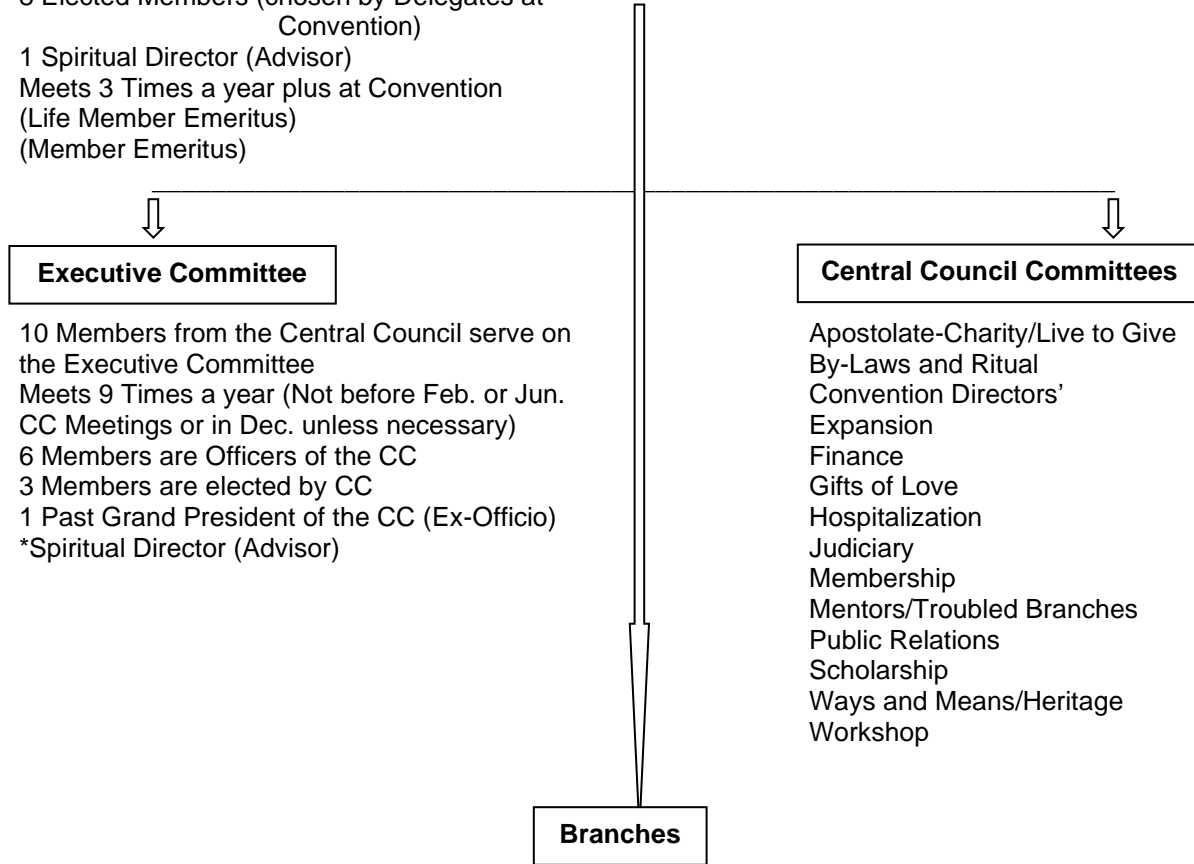
8 Elected Members (chosen by Delegates at Convention)

1 Spiritual Director (Advisor)

Meets 3 Times a year plus at Convention

(Life Member Emeritus)

(Member Emeritus)



The Branches are the basic units of the Federation and are organized along parish lines. Branches are urged to support their Pastors and participate fully in the ministerial life of the parish.

District Councils

The District Councils are composed of Delegates from the Branches within a certain boundary. The Councils have administrative, but not legislative power. They continue to further the ideals and goals of the Federation on a much larger scale than a Branch can do.

*****Chairperson of the Mentors – Grand 1st Vice President of the CC
(Grand 2nd Vice President can assist.)*****



District Mentor

(The District Mentor is a member of the District Council with a vote.)



Branch Mentor

(The Branch Mentor is a member of the District Council with a vote)